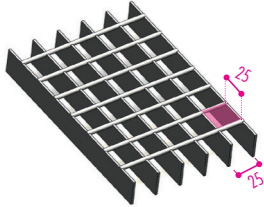


Mesh 25x25 mm

MESH PATTERN



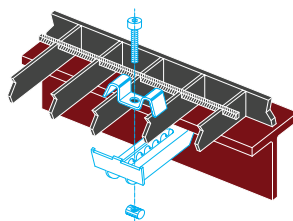
the Load Bearing classes refers to the CLEAN LIGHT between placements, i.e. the distance between one support and the other.

| B.B. mm HxS | Conn. | Dimensions mm | Raw kg/mq | Galvan. kg/mq | CL1 Clean light between placements mm | CL2 Clean light between placements mm | CL3 Clean light between placements mm | CL4 Clean light between placements mm |
|-------------|-------|---------------|-----------|---------------|--|--|--|--|
| 25x2 | ○ 4mm | 6100x1000 | 19,2 | 20,6 | 1087 | 238 | 177 | 136 |



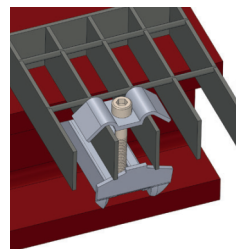
GRATING CLAMP PATENTED

non slip

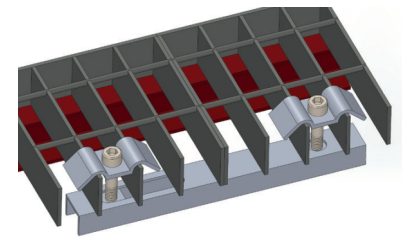


Galvanized grating clamp patented Baldassar Model for mesh 21 - 25 mm

GRATING CLAMPS STANDARD



Galvanized grating double clamp Baldassar Model for mesh 21 - 25 mm



Galvanized grating double clamp Baldassar Model for mesh 21 - 25 mm



Class 1 – Compact crowd pedestrian load
 D.M. 14/01/2008 - 3.1.4
 Chart 3.1.II - Category E.
 Dynamic load 600 daN/m²
 Material: Steel S235JR
 Sigma yield strength = 23,5 daN/mm²
 Sigma comparison = 22,38 daN/mm²
 Max.deflection = 5mm
 Max.deflection = 1/200 di Ln



Class 2 - vehicle
 D.M. 14/01/2008 - 3.1.4
 Chart 3.1.II - Category F
 Dynamic load 1000 daN on imprint
 200x200 mm total ground mass
 up to 3000 kg
 Material: Steel S235JR
 Sigma yield strength = 23,5 daN/mm²
 Sigma comparison = 22,38 daN/mm²
 max. deflection = 5mm
 Max.deflection = 1/200 di Ln



Class 3 – Light truck
 Dynamic load 3000 daN on imprint
 400x200 mm ground total mass
 up to 6000 kg
 Material: Steel S235JR
 Sigma yield strength = 23,5 daN/mm²
 Sigma comparison = 22,38 daN/mm²
 max.deflection = 5mm
 Max.deflection = 1/200 di Ln



Class 4 – Heavy trucks
 Dynamic load 9000 daN on imprint
 600x250 mm ground total mass
 up to 45000 kg
 Material: Steel S235JR
 Sigma yield strength = 23,5 daN/mm²
 Sigma comparison = 22,38 daN/mm²
 max.deflection. = 5mm
 Max.deflection = 1/200 di Ln