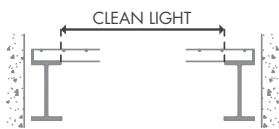
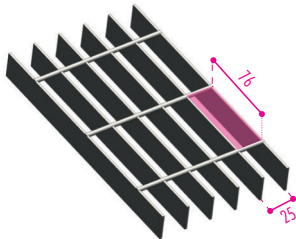


## Mesh 25x76 mm

### MESH PATTERN

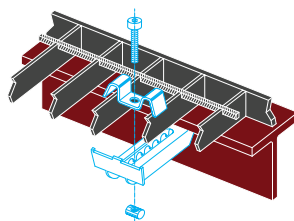


the Load Bearing classes refers to the CLEAN LIGHT between placements, i.e. the distance between one support and the other.

B.B. mm HxS	Conn.	Dimensions mm	Raw kg/mq	Galvan. kg/mq	CL1 Clean light between placements mm	CL2 Clean light between placements mm	CL3 Clean light between placements mm	CL4 Clean light between placements mm
25x2	○ 4mm	6100x1000	16,6	17,7	1087	238	177	136
25x2	○ 4mm	6100x1200	16,6	17,7	1087	238	177	136
30x2	○ 4mm	6100x1000	19,6	21,0	1247	298	213	164
30x2	○ 4mm	6100x1200	19,6	21,0	1247	298	213	164
40x2	○ 4mm	6100x1000	25,7	27,5	1547	453	302	218
25x3	○ 5mm	6100x1000	24,2	26,1	1203	307	218	167
30x3	○ 5mm	6100x1000	29,8	31,9	1380	398	270	201
40x3	○ 5mm	6100x1000	39,3	42,1	1712	629	375	268
50x3	○ 5mm	6100x1000	48,7	52,1	2024	928	476	349
60x3	○ 5mm	6100x1000	58,0	62,1	2321	1292	597	433
* 70x3	○ 5mm	6100x1000	67,3	72,1	2605	1690	741	505
* 80x3	○ 5mm	6100x1000	76,7	82,0	2880	1930	906	577
40x4	○ 6mm	6100x1000	53,1	56,8	1840	806	435	316
50x4	○ 6mm	6100x1000	65,6	70,2	2175	1204	568	416
60x4	○ 6mm	6100x1000	78,2	83,7	2494	1595	729	500
70x4	○ 6mm	6100x1000	90,8	97,1	2800	1859	921	583
* 80x4	○ 6mm	6100x1000	103,3	110,5	3094	2124	1142	670
* 90x4	○ 6mm	6100x1000	115,9	124,0	3380	2389	1392	769
* 100x4	○ 6mm	6100x1000	128,4	137,4	3658	2654	1672	879
* 70x5	○ 6mm	6100x1000	113,3	121,2	2960	2002	1101	654
* 80x5	○ 6mm	6100x1000	124,7	138,1	3272	2288	1377	763
* 100x5	○ 6mm	6100x1000	160,6	171,8	3868	2858	1993	1023

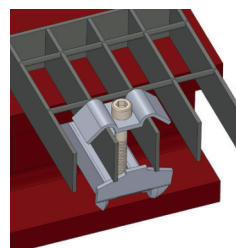
\*Not always available in stock

## GRATING CLAMP PATENTED non slip

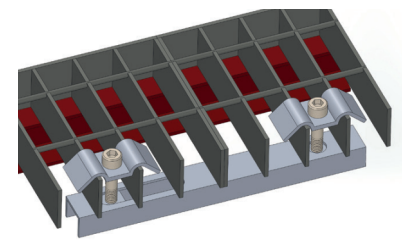


Galvanized grating clamp patented Baldassar Model for mesh 21 - 25 mm

## GRATING CLAMPS STANDARD



Galvanized grating double clamp Baldassar Model for mesh 21 - 25 mm



Galvanized grating double clamp Baldassar Model for mesh 21 - 25 mm



Class 1 – Compact crowd pedestrian load  
 D.M. 14/01/2008 - 3.1.4  
 Chart 3.1.II - Category E.  
 Dynamic load 600 daN/m<sup>2</sup>  
 Material: Steel S235JR  
 Sigma yield strength = 23,5 daN/mm<sup>2</sup>  
 Sigma comparison = 22,38 daN/mm<sup>2</sup>  
 Max.deflection = 5mm  
 Max.deflection = 1/200 di Ln



Class 2 – vehicle  
 D.M. 14/01/2008 - 3.1.4  
 Chart 3.1.II - Category F  
 Dynamic load 1000 daN on imprint  
 200x200 mm total ground mass  
 up to 3000 kg  
 Material: Steel S235JR  
 Sigma yield strength = 23,5 daN/mm<sup>2</sup>  
 Sigma comparison = 22,38 daN/mm<sup>2</sup>  
 max.deflection = 5mm  
 Max.deflection = 1/200 di Ln



Class 3 – Light truck  
 Dynamic load 3000 daN on imprint  
 400x200 mm ground total mass  
 up to 6000 kg  
 Material: Steel S235JR  
 Sigma yield strength = 23,5 daN/mm<sup>2</sup>  
 Sigma comparison = 22,38 daN/mm<sup>2</sup>  
 max.deflection = 5mm  
 Max.deflection = 1/200 di Ln



Class 4 – Heavy trucks  
 Dynamic load 9000 daN on imprint  
 600x250 mm ground total mass  
 up to 45000 kg  
 Material: Steel S235JR  
 Sigma yield strength = 23,5 daN/mm<sup>2</sup>  
 Sigma comparison = 22,38 daN/mm<sup>2</sup>  
 max.deflection = 5mm  
 Max.deflection = 1/200 di Ln